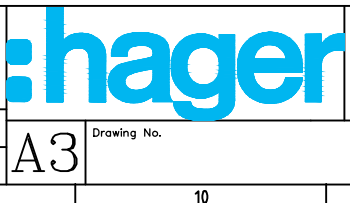


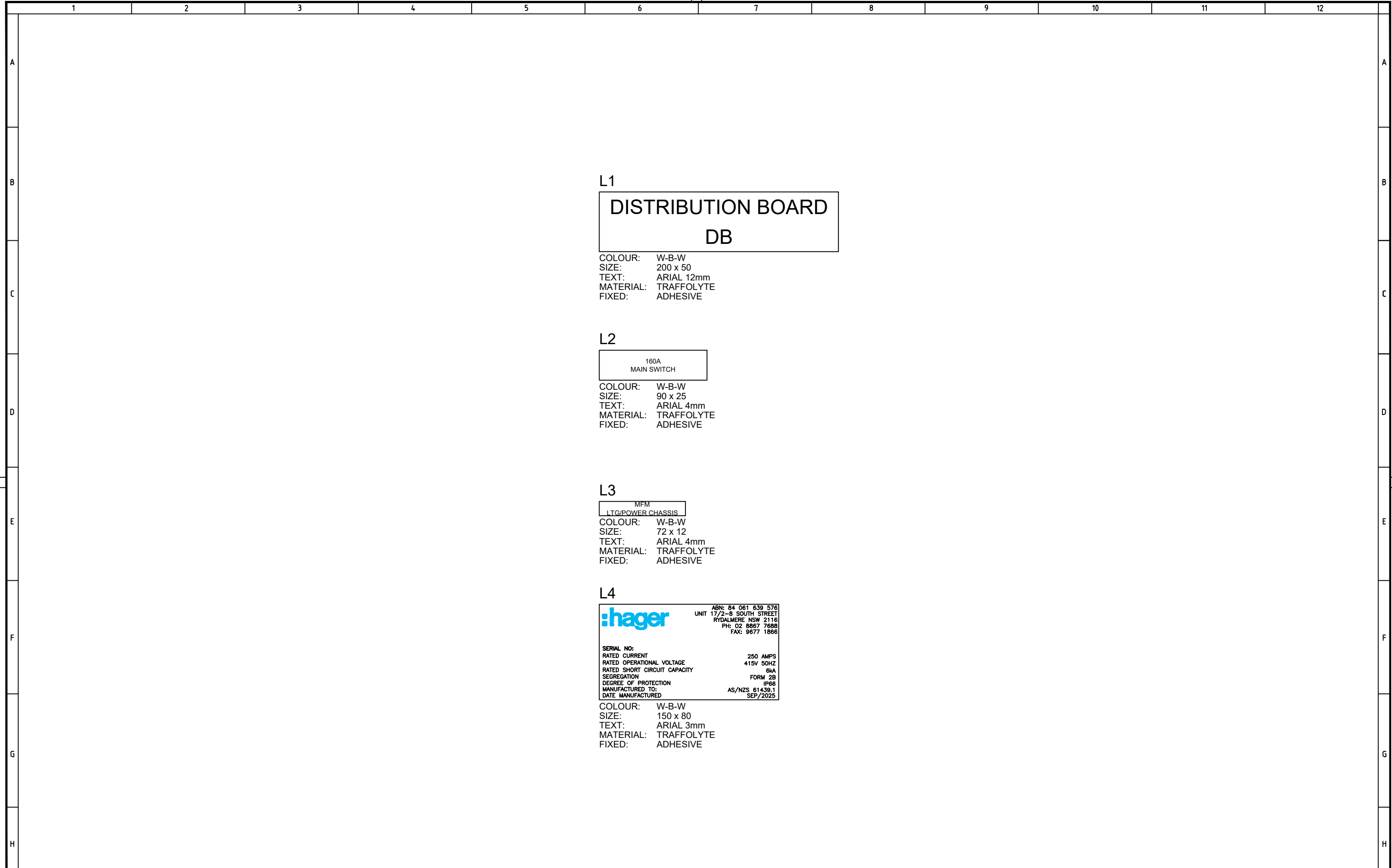
Rev	Date	Drawn	Checked	Approved	Description
0	08/09/25	DP	DP		FOR APPROVAL

The information on this drawing is the property of Hager Electro. It is disclosed in confidence and is not to be reproduced, used or disclosed in part or in whole except for the purpose for which furnished.

WHOLESALER: _____ CONTRACTOR: _____
 Cod File: _____ Date: _____
 QUOTE NUMBER : _____



Title: OCULAR EVSE
 EV-DB OUTDOOR IP66 48 POLE
 SINGLE LINE DIAGRAM
 Sheet 1 of 3 Revision 0



L1

DISTRIBUTION BOARD
DB

COLOUR: W-B-W
 SIZE: 200 x 50
 TEXT: ARIAL 12mm
 MATERIAL: TRAFFOLYTE
 FIXED: ADHESIVE

L2

160A
MAIN SWITCH

COLOUR: W-B-W
 SIZE: 90 x 25
 TEXT: ARIAL 4mm
 MATERIAL: TRAFFOLYTE
 FIXED: ADHESIVE

L3

MFM
LTG/POWER CHASSIS

COLOUR: W-B-W
 SIZE: 72 x 12
 TEXT: ARIAL 4mm
 MATERIAL: TRAFFOLYTE
 FIXED: ADHESIVE

L4

hager ABN: 84 061 639 576
 UNIT 17/2-8 SOUTH STREET
 RYDALMERE NSW 2116
 PH: 02 8867 7688
 FAX: 9677 1866

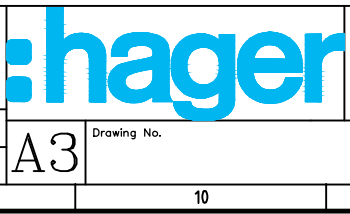
SERIAL NO:
 RATED CURRENT: 250 AMPS
 RATED OPERATIONAL VOLTAGE: 415V 50HZ
 RATED SHORT CIRCUIT CAPACITY: 6kA
 SEGREGATION: FORM 2B
 DEGREE OF PROTECTION: IP66
 MANUFACTURED TO: AS/NZS 61439.1
 DATE MANUFACTURED: SEP/2025

COLOUR: W-B-W
 SIZE: 150 x 80
 TEXT: ARIAL 3mm
 MATERIAL: TRAFFOLYTE
 FIXED: ADHESIVE

Rev	Date	Drawn	Checked	Approved	Description
0	08/09/25	DP	DP		FOR APPROVAL

The information on this drawing is the property of Hager Electro. It is disclosed in confidence and is not to be reproduced, used or disclosed in part or in whole except for the purpose for which furnished.

WHOLESALER: _____ CONTRACTOR: _____
 Cod File: _____ Date: _____
 QUOTE NUMBER : _____



Title: OCULAR EVSE
 EV-DB OUTDOOR IP66 48 POLE
 LAYOUT
 Sheet 3 of 3 Revision 0