

OCULAR

# IQ Home Solar

7kW / 22kW

Version 2.1



# Charging ahead, Powering tomorrow.

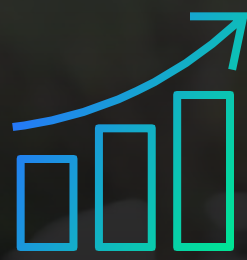
Welcome to the future of charging with the IQ Home Solar, our cutting-edge charging solution is designed to meet the needs of modern electric vehicle owners, offering versatility, efficiency, and convenience at their doorstep. The IQ Home Solar comes in both single-phase (7kW) and three-phase (22kW) configurations and is compatible with all electric vehicles in Australia.

The system comes with CT clamps to measure your solar production excess, which enables you to charge with green, free electricity from your solar panels, and protects your home from overloading.

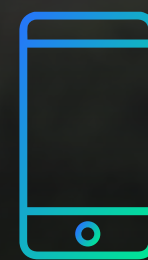
The IQ Home Solar has three different charging modes to suit your individual needs and solar production levels. Built to withstand the Australian elements, it comes with IP55 protection, ensuring reliable performance in any weather conditions. The unit's compact design makes it ideal for residential settings, allowing for easy installation and seamless integration into your home. Equipped with a 5m type 2 cable, the charger offers convenient and hassle-free charging for your EV.



**Compact size**



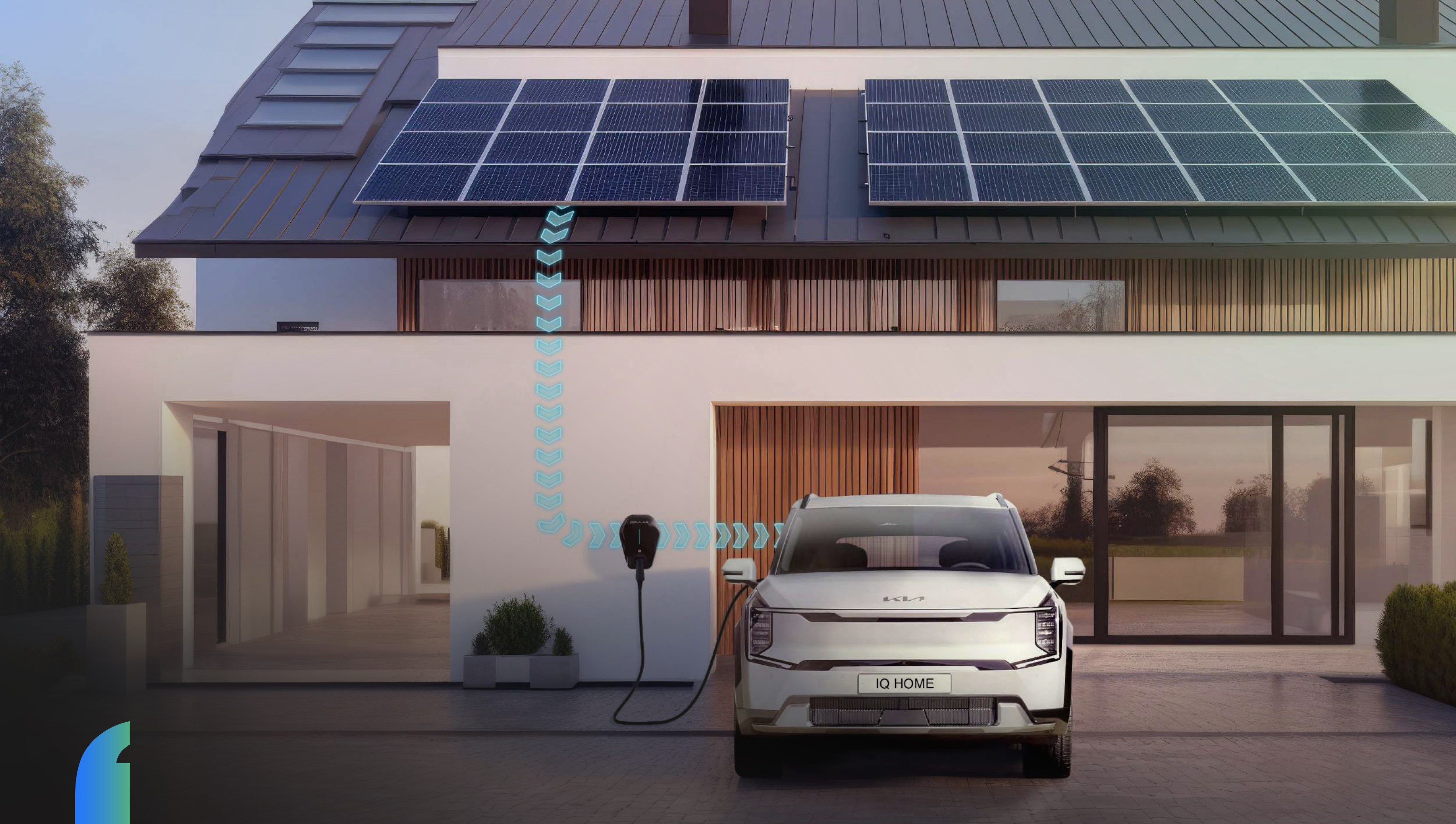
**Cost savings**



**OCPP app**



**Solar capability**

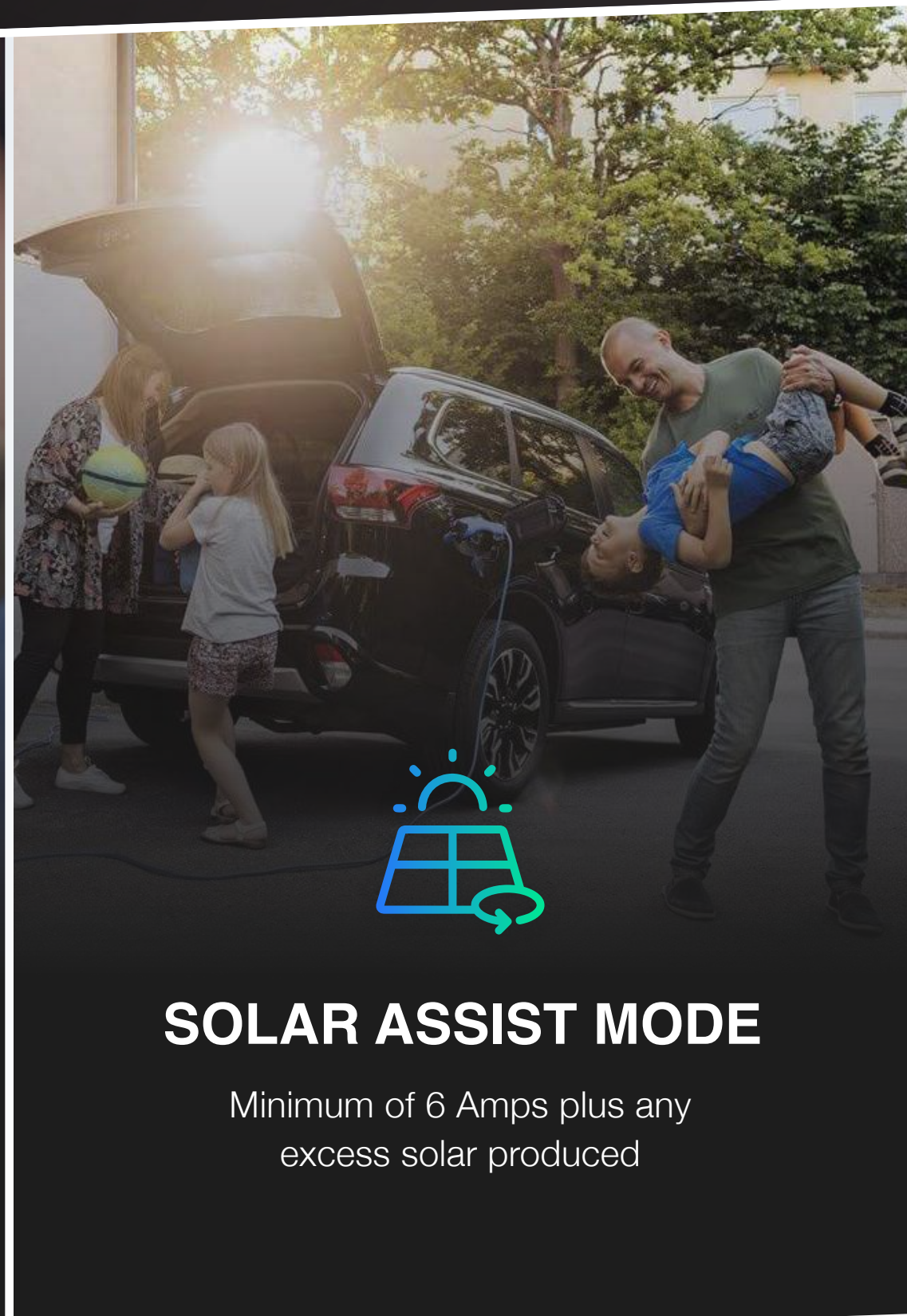


Harness the greenest energy with solar and load management capabilities.



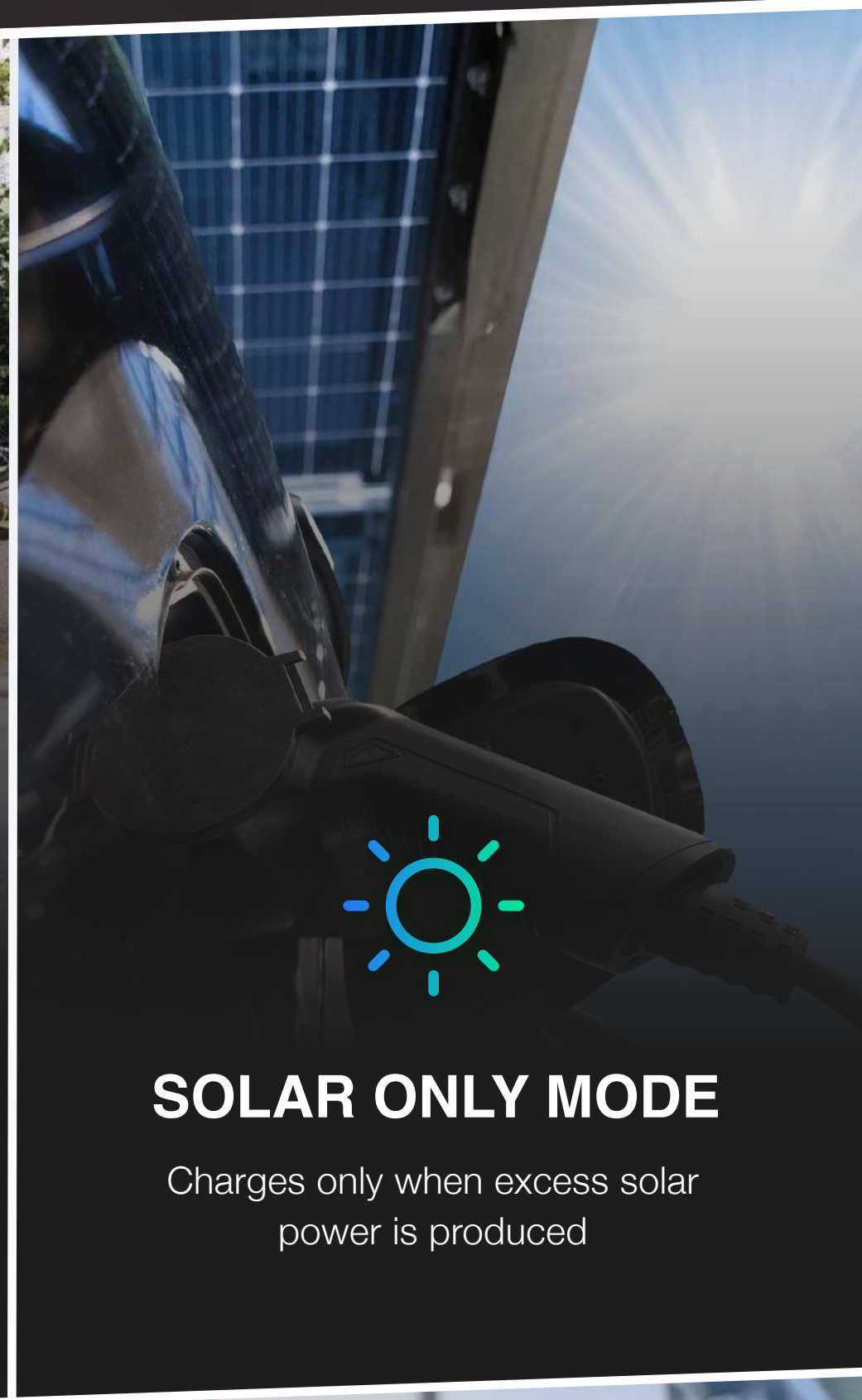
## FAST MODE

Maximum power from a renewable energy source or grid power



## SOLAR ASSIST MODE

Minimum of 6 Amps plus any excess solar produced



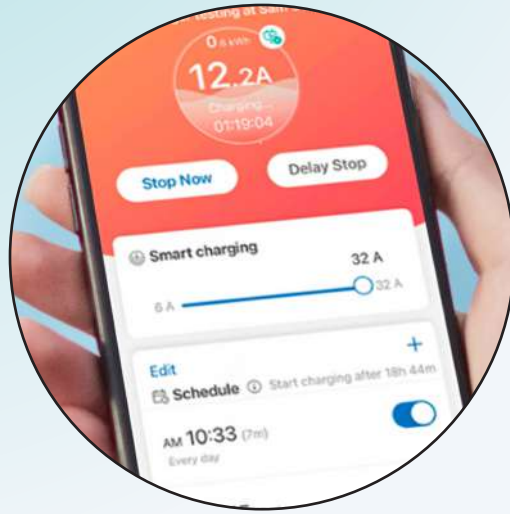
## SOLAR ONLY MODE

Charges only when excess solar power is produced

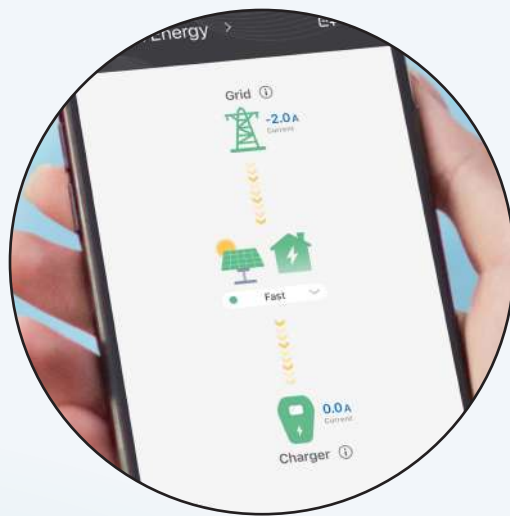


Designed to create enduring value for Australian homes offering flexibility and efficiency while combining advanced technology with user-friendly features.

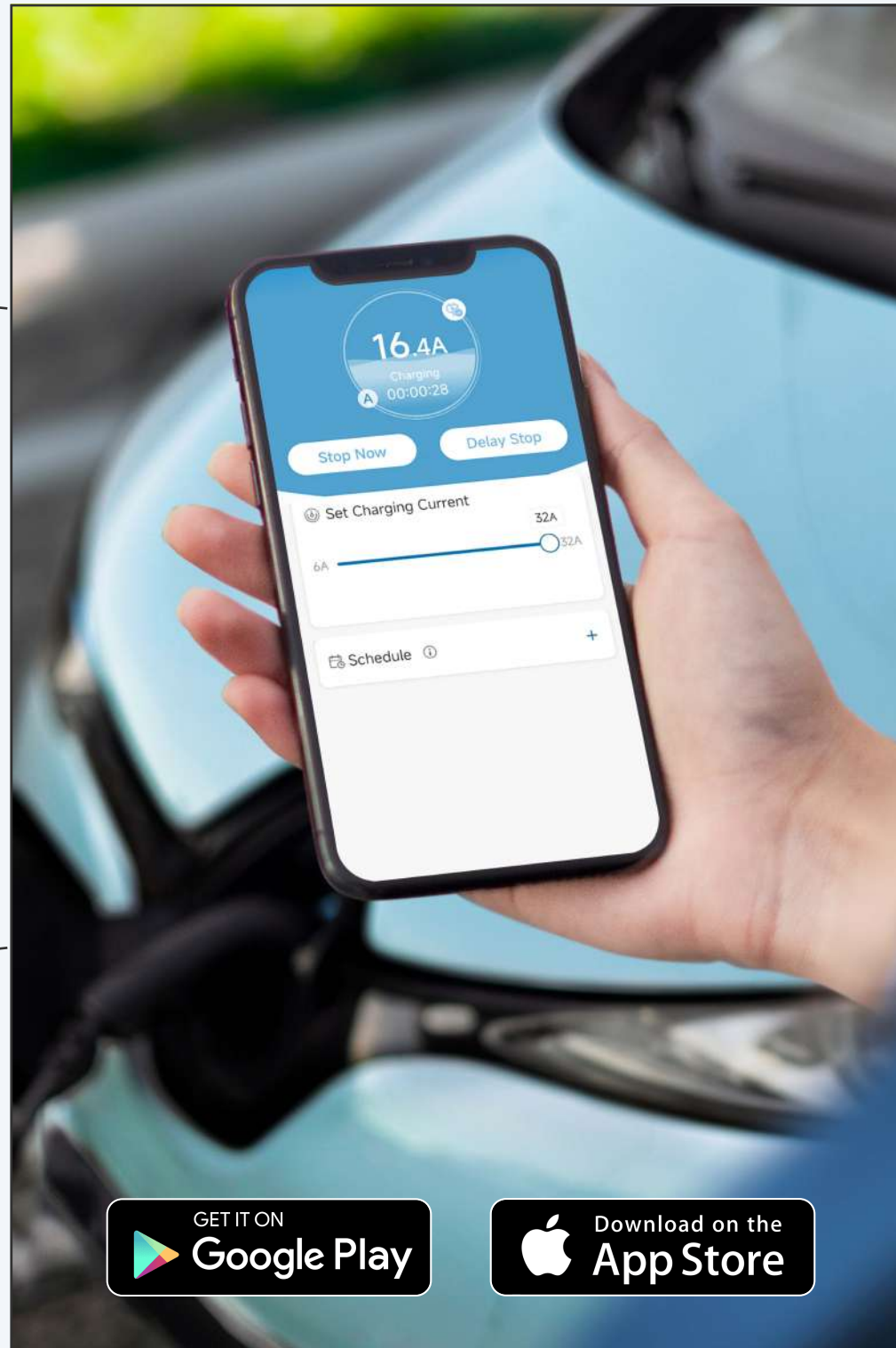
# OCULAR SMART HOME APP



Initiate and schedule charging sessions



Solar power consumption monitoring

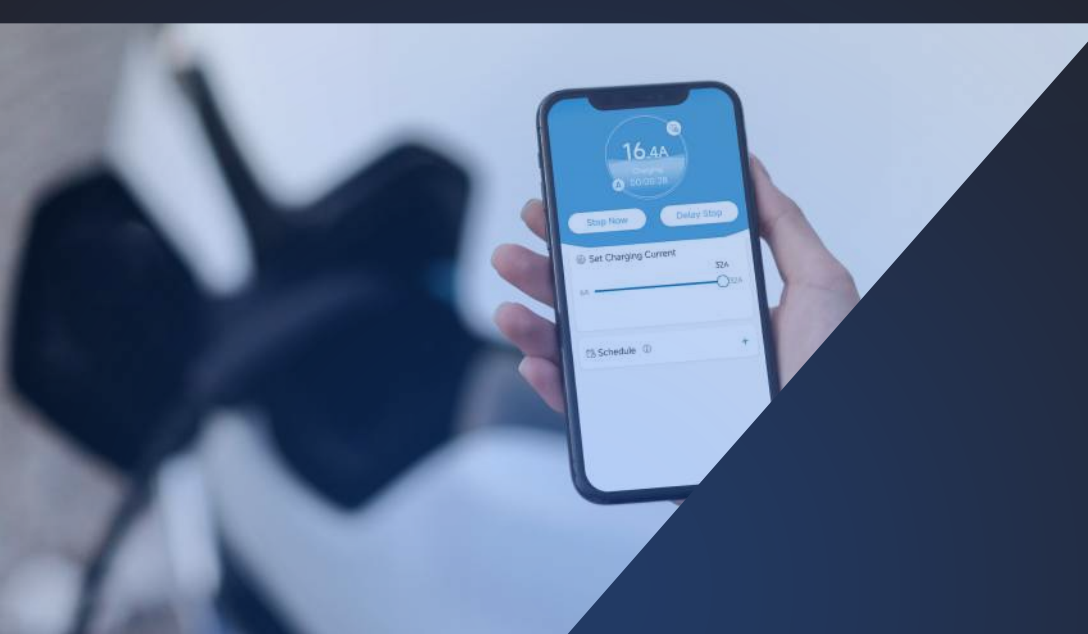


Intelligent charging with Ocular app



Charging session history

With OCPP 1.6 and 2.0.1 capability, the IQ Home Solar seamlessly integrates with your phone for real-time monitoring and analysis.



Reduce your installation and energy costs with solar and load balancing functionality.

# OCULAR IQ HOME SOLAR DATASHEET

Model Number	IOCAH15-7T	IOCAH15-22T
Power		
Power Output	7.2kW (1-Phase)	22kW (3-Phase)
EV Charging Connector	5m Type-2 Cable	
Input and Output Voltage	230V ± 20%	400V ± 20%
Input and Output Current	32A max per phase	
Recommended Circuit Breaker	40A type A RCBO	
Frequency (Hz)	50/60Hz	
Current Transformers (CT) for Solar and Load Control		
CTs Included	1	3
CT Length of Signal Line	20m (Extendable up to 100m with insulated twisted pair cable)	
CT Primary Rated Current	100A max current	
CT Internal Diameter	16mm (fits max cable size 50mm <sup>2</sup> XLPE)	
User Interaction		
Display	LED indication lights	
Charger Control Method	Mobile App, physical button, plug and charge	
Safety		
Internal RCD	30mA AC & 6mA DC Leakage	
Electrical Protection	Over current, Short circuit, Over voltage, Under voltage, Ground fault, Lightning surge, Over temperature	
Communication		
Ocpp	1.6J and 2.0.1 (Firmware upgrade required)	
Internet Connection	Ethernet, Wi-Fi	
Communication Type	Modbus (TCP/IP)	
Energy Meter	Integrated Meter	
Load Control	Compatible with Ocular Load Controller or OCPP smart profiles	
General Data		
Ambient Air Temperature for Operation	-30°C to +50°C	
Ambient Air Temperature for Storage	-40°C to +70°C	
Working Humidity	5% - 95% relative humidity, non-condensing	
IP Performance	IP55	
Mounting	Wall Mount	
Dimension (H x W x D, mm)	398 * 285 * 226 mm	
Net Weight	4.5 kg	4.7 kg
Certification	CE, IEC /EN 61851-1, IEC 61008-1-A1, IEC 62955-1-A1, IEC/EN 61851-21-2, IEC 62196-2, RCM	
Warranty	2 Years (Extended warranties available)	

# POWERING THE JOURNEYS OF AUSTRALIA



**2500+**

homes enabled  
with ev charging



**65+**

electric vehicle  
variants compatible



**\$150K+**

cumulative  
cost savings



# OCULAR

Charging ahead, powering tomorrow.

